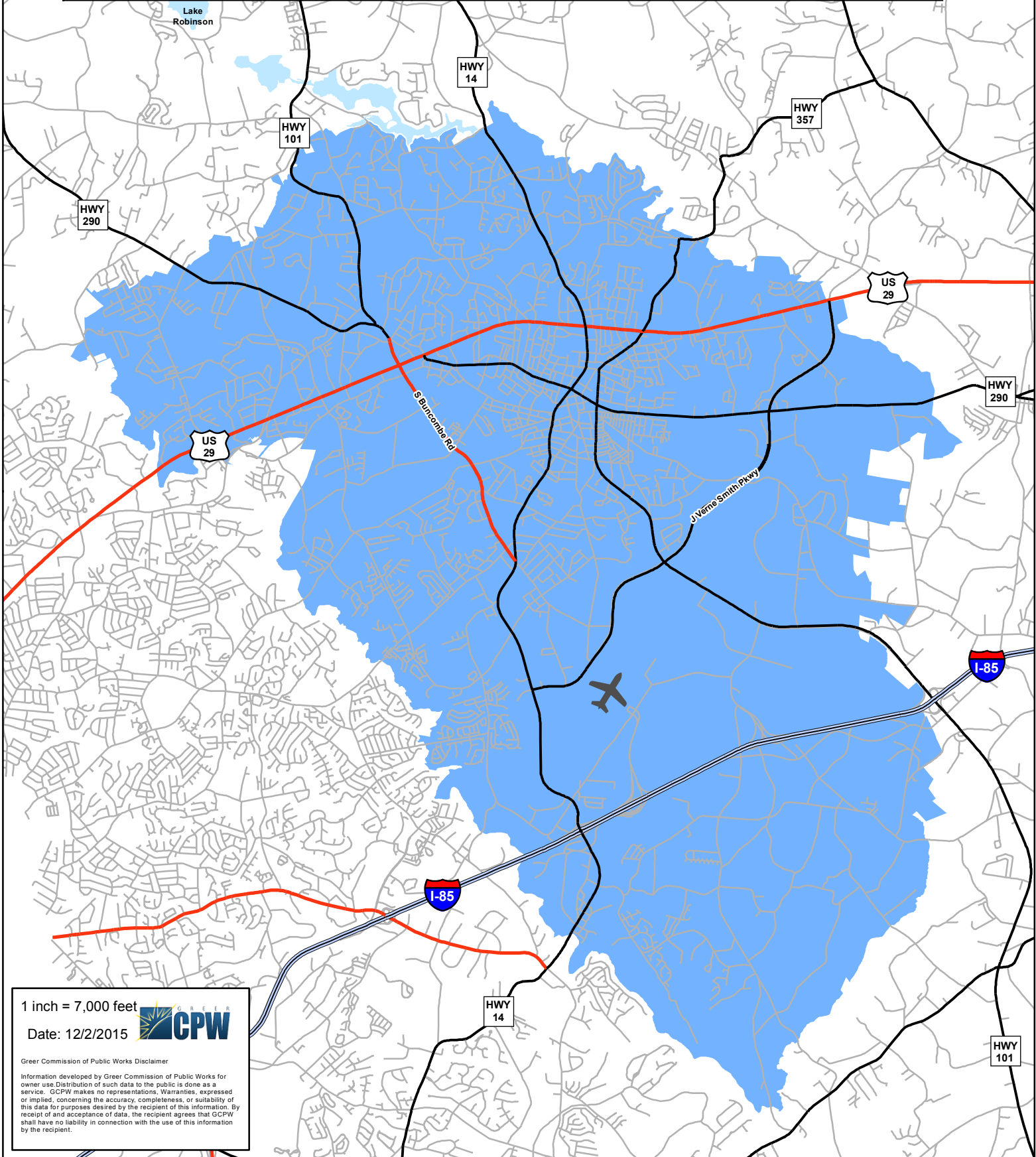


GreerCPW



Approximate Water Area Currently Served.



1 inch = 7,000 feet

Date: 12/2/2015



Greer Commission of Public Works Disclaimer

Information developed by Greer Commission of Public Works for owner use. Distribution of such data to the public is done as a service. CPW makes no representations, Warranties, expressed or implied, concerning the accuracy, completeness, or suitability of this data for purposes desired by the recipient of this information. By receipt of and acceptance of data, the recipient agrees that CPW shall have no liability in connection with the use of this information by the recipient.