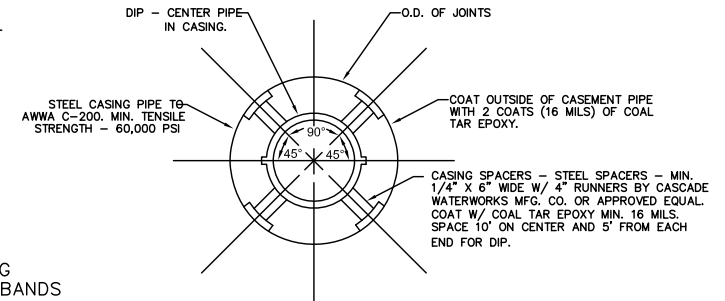
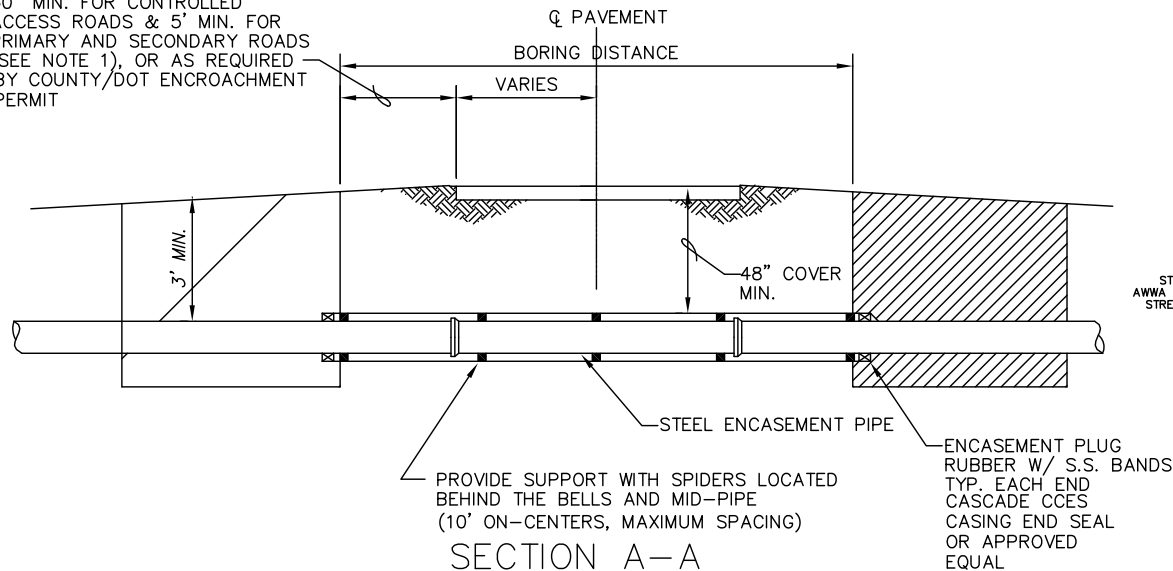


MIN. STEEL CASING SCHEDULE		
DIP WL SIZE	STEEL CASING SIZE	MINIMUM WALL THICKNESS
4"	10"	0.250"
6"	12"	0.250"
8"	16"	0.250"
10"	18"	0.250"
12"	24"	0.312"
14"	24"	0.312"
15"	26"	0.344"
16"	30"	0.406"
18"	30"	0.406"
20"	36"	0.469"
24"	42"	0.562"
30"	48"	0.562"
36"	54"	0.562"

30" MIN. FOR CONTROLLED ACCESS ROADS & 5' MIN. FOR PRIMARY AND SECONDARY ROADS (SEE NOTE 1), OR AS REQUIRED BY COUNTY/DOT ENCROACHMENT PERMIT



#### NOTES:

1. THE NEAR EDGE OF THE PIT CAN BE NO CLOSER TO THE EDGE OF THE TRAVELWAY THAN ITS DEPTH BELOW THE SURFACE OF THE TRAVELWAY UNLESS BULKHEADED.
2. ALL PIPE WITHIN AND TO 5' OUTSIDE THE CASING TO BE D.I.P.
3. ALL PIPING IN CASING SHALL UTILIZE LOCKING GASKETS SUPPLIED BY THE PIPE MANUFACTURER.

## GREER COMMISSION OF PUBLIC WORKS

### CASING PIPE

### BORE AND JACK DETAIL

APPROVED BY:

--

SCALE:

NTS



DATE:

FEBRUARY 2021

REVISED:

--

DRAWING NO.

W-11